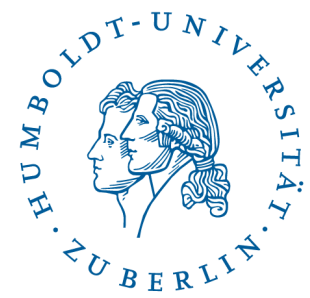


# Dealing with research data

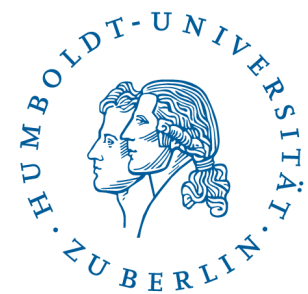
*HU-Docs event for PhD students*  
25<sup>th</sup> October 2013

Elena Simukovic,  
Research data management coordinator  
CMS HU Berlin



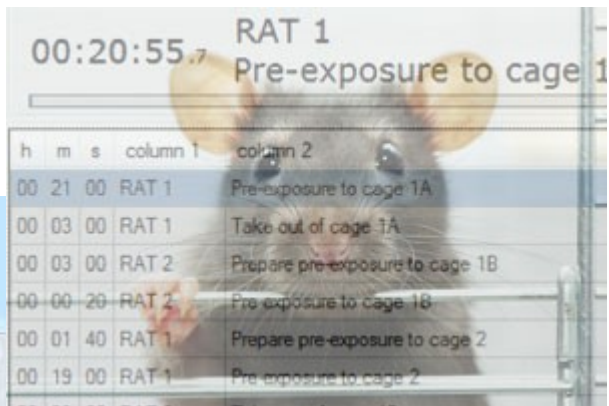
# This talk is not about...

- How to process your data or which software to use,
  - Each scientific community has its own standards.
- But:
  - University's expectations in how to handle your data with respect to good scientific practice and responsible conduct of research,
  - To enable interested parties to verify and re-use your research results.

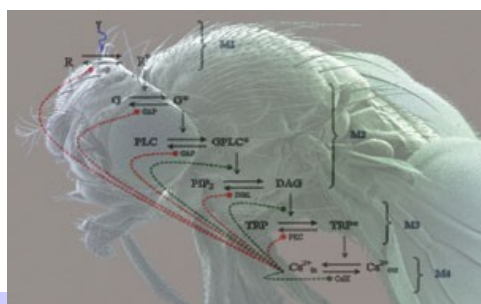
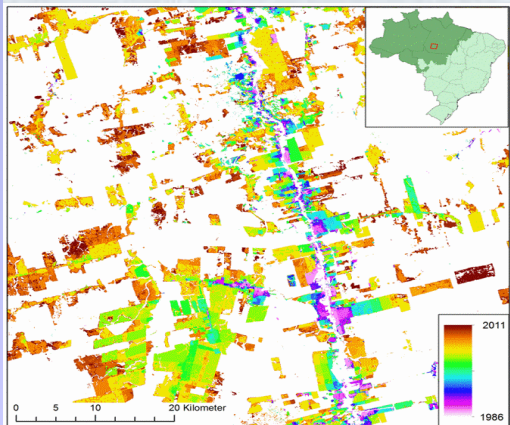
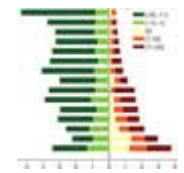
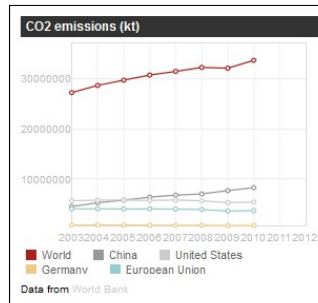
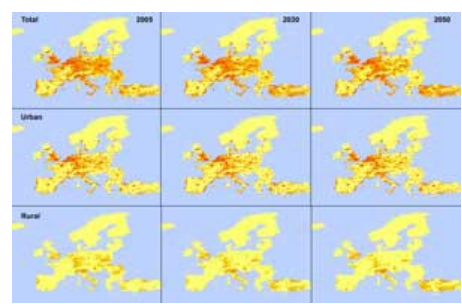
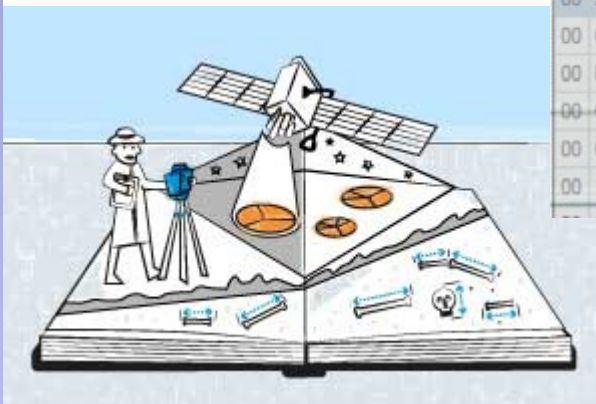


# What is 'Research data'?

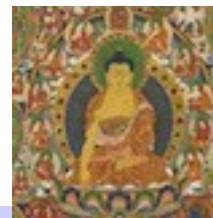
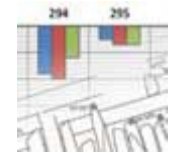
Na	K	Sc	Cr	Fe	Co	Ni	Zn	As
3657 ±0.93	18900 ±0.92	14.7 ±0.14	480.0 ±0.445	4330 ±0.73	24.3 ±0.28	201 ±2.7	15.6 ±0.81	11.4 ±0.57
3071 ±0.94	18900 ±0.92	15.4 ±0.14	202.0 ±0.48	4990 ±0.48	24.7 ±0.73	187 ±2.8	11.4 ±0.81	10.4 ±0.57
3499 ±0.96	18200 ±0.92	15.6 ±0.13	198.0 ±0.48	4590 ±0.79	26.3 ±0.78	198 ±2.8	10.5 ±0.81	10.5 ±0.58
3196 ±0.97	19400 ±0.92	16.4 ±0.15	217.0 ±0.48	4890 ±0.82	27.3 ±0.80	204 ±2.9	10.9 ±0.81	10.9 ±0.59
3328 ±1.07	23400 ±0.92	15.9 ±0.15	209.0 ±0.475	4640 ±0.79	26.0 ±0.78	192 ±2.7	10.7 ±0.81	10.3 ±0.56
3247	18900	15.2	193.0	4790	25.8	196.0	10.7	10.3



Credits:  
 Journal of Conservation and Museum Studies  
 Journal of Open Archaeology Data  
 Journal of Public Health Data  
 Journal of Open Research Software  
 HU Berlin Geomatics Lab  
 World Bank Open Data



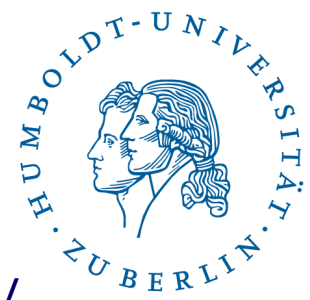
containing the con present to the BR  
 Egyptian Monument Archaelogical Ass  
 of Antiquities at accompanying work  
 Leydon are to be p upon the monuments  
 orders of the Gove of America, my tar  
 that in a country Aboriginal Monumen  
 scientific underg The Mississippi Va  
 particularly in a state of New York  
 great number of su to the Association  
 the success of a w the Smithsonian In  
 great use for the I shall be happy t  
 archaelogical re in the archaelogy  
 studies



25<sup>th</sup> October 2013

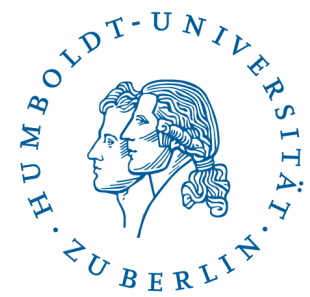
Elena Simukovic  
 Computer and Media Service  
 Humboldt-Universität zu Berlin






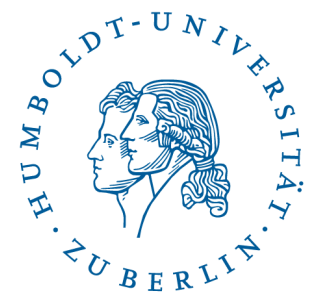
# Dissertations and research data

- Good scientific practice / Responsible conduct of research / Research integrity:
  - *„Data underlying scholarly publications should be accessible for at least ten years“*  
(German Research Foundation, 1998; HU, 2002)
- Guidelines for doctoral studies:
  - *„Both supervisors and doctoral candidates are committed to comply with the Rules of good scientific practice“* (HU, 2012)
- Good data is good for your reputation:
  - Bad example: *„Cardiology researcher faked data in his prizewinning PhD thesis“* (Retraction Watch, 2013/10/17)
- More impact, visibility and career recognition when sharing data (cf. Piwowar et al., 2007)



# So what to do? Available support

- Publish your dissertation:
    - „The academic senate of the Humboldt University has decided that students should be given the option to meet the obligation of publishing their dissertation also by electronic publication on the document and publication server of the HU Berlin“, see Information Leaflet <http://edoc.hu-berlin.de>
  - Publish your research data:
    - Advice & guidance offered by RDM-coordinator
    - LAUDATIO-Repository (**L**ong-term **A**ccess and **U**sage of **D**eeply **A**nnnotated **I**nformation) – a subject repository for corpus linguistics researchers, a joint project at CMS and Department of German Studies and Linguistics of HU.
    -  **re3data.org**  
REGISTRY OF RESEARCH DATA REPOSITORIES
- A joint project at HU Berlin, GFZ Potsdam and KIT Library.



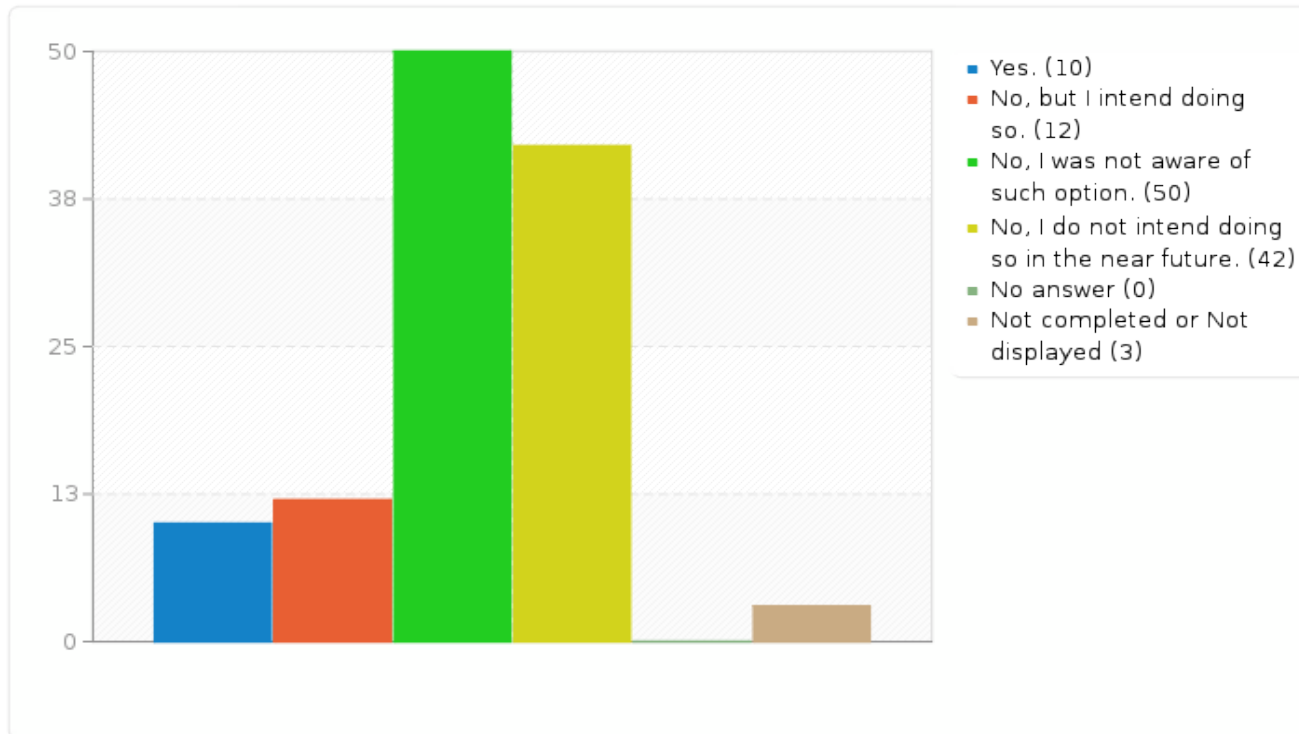
# Some evidence from RDM survey

- Survey ran for 6 weeks in early 2013
- Target group was academic staff at HU Berlin (~2000 persons)
- Overall response rate of ~24 % (499)
- 117 PhD students from most disciplines (departments and institutes)
  - Chemistry (13)
  - Psychology (11)
  - Social sciences (9)
  - History (8)
  - Biology (7)
- Important: Participants were not asked to rely answer to a specific type of research data, e.g. only research data based on ETDs

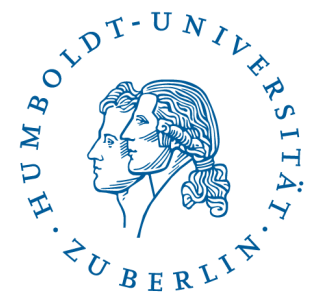
See also Maxi Kindling's talk at 16th International Symposium on Electronic Theses And Dissertations (ETD 2013) in Hong Kong, 25.09.2013: <http://lib.hku.hk/etd2013/presentation/Maxi-ETD-20130925.pdf>

# Experience in data sharing

- Have you ever deposited your research data in a data archive or repository?







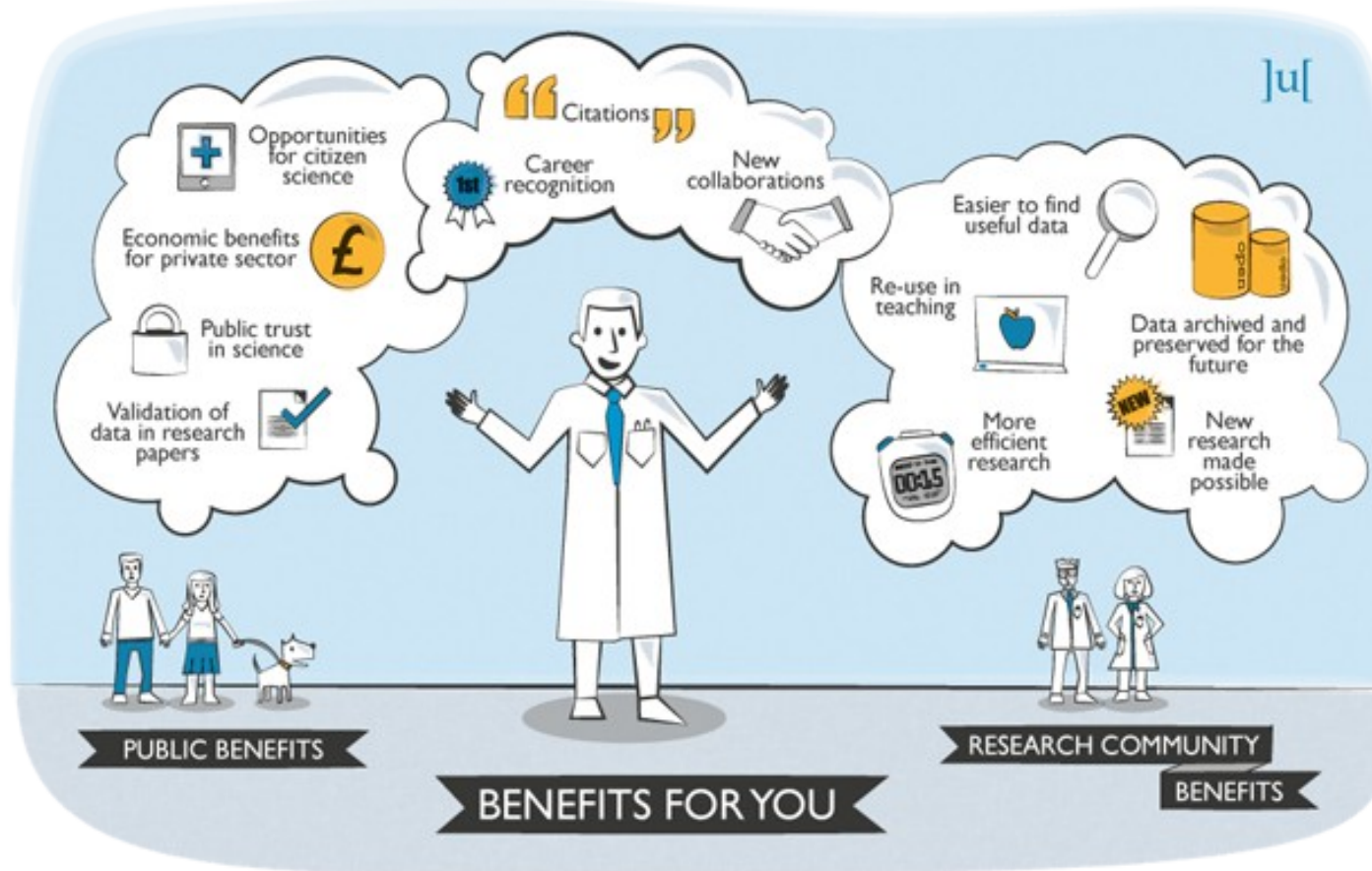
# Some names

## A sample of journals and data repositories:

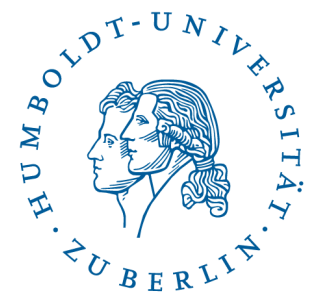
- › [www.plosone.org/](http://www.plosone.org/)
- › <http://www.myexperiment.org/>
- › Dalton Transaction
- › Organometallics
- › SHARE European Social Survey
- › Scifinder, web of knowledge
- › Angewandte Chemie, Chemical Communications, Chemistry - An European Journal, Journal of the American Chemical Society, Journal of Organic Chemistry"
- › DRYAD
- › Dropbox
- › [prl.aps.org](http://prl.aps.org)
- › Polylog - Zeitschrift für Interkulturelle Philosophie, Deutsche Zeitschrift für Philosophie
- › <http://sfb649.wiwi.hu-berlin.de/fedc/data.php>
- › GESIS
- › SESS



# Benefits of 'Open Science'



Source: Journal of Open Archaeology Data <http://openarchaeologydata.metajnl.com/>



# For more information

## References:

Kindling, Maxi (2013): Doctoral theses' research data and metadata documentation. 16th International Symposium on Electronic Theses And Dissertations (ETD 2013), Hong Kong. Available online: <http://lib.hku.hk/etd2013/presentation/Maxi-ETD-20130925.pdf>

Simukovic, Elena; Kindling, Maxi; Schirmbacher, Peter (2013): Umfrage zum Umgang mit digitalen Forschungsdaten an der Humboldt-Universität zu Berlin. Umfragebericht, Version 1.0. Online verfügbar auf dem edoc-Server der Humboldt-Universität zu Berlin. urn:nbn:de:kobv:11-100213001

Simukovic, Elena et al. (2013). Humboldt-Universität zu Berlin Research Data Management Survey Results. ZENODO-Repository. <https://zenodo.org/record/7468>

Simukovic, Elena et al. (2013). Humboldt-Universität zu Berlin Research Data Management Survey Results. Comparing respondent groups "Professor" and "Research associate". ZENODO-Repository. <https://zenodo.org/record/7469>

# Thank you

## and good luck with your thesis!



**Elena Simukovic** / Research data management coordinator  
<http://www.cms.hu-berlin.de/dataman>  
[elena.simukovic@cms.hu-berlin.de](mailto:elena.simukovic@cms.hu-berlin.de)

25<sup>th</sup> October 2013

